

532 Big Lake Rd., Homestead, MT 59242

AUCTION

Farm Equipment & Estates

THURSDAY, OCTOBER 21 | 10AM^{MDT} 2021



2013 JOHN DEERE S690 STS
shows 1,657 sep. hrs; shows 2,273 engine hrs.



2009 JOHN DEERE 9530
shows 3,807 hrs.



2011 JOHN DEERE 4930



1995 JOHN DEERE 8300
shows 318 hrs.



1993 JOHN DEERE 7600
shows 7,361 hrs.



**2013 JOHN DEERE 1890
W/ 2013 JD 1910 CART**



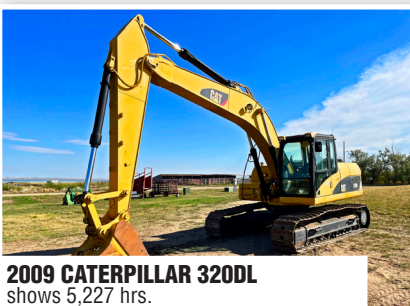
**2010 JOHN DEERE A400
W/HONEY BEE W536**



2012 CATERPILLAR 304ECR
shows 702 hrs.



2011 CATERPILLAR 420E
shows 1,557 hrs.



2009 CATERPILLAR 320DL
shows 5,227 hrs.



2007 CATERPILLAR 345CL

Lunch will be served on-site on auction day

PREVIEW:

By appointment. Contact Dale, 406.963.7512

LOADOUT:

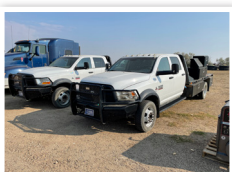
By appointment, all items to be removed by Sunday, November 7th. Contact Dale, 406.963.7512

INCLUDES ▼

MFWD, 4WD & 2WD Tractors, Antique Tractors, Construction Equipment, Combines, Trailers, Hay Equipment, Trucks, Skid Steers, Farm Support Items, Roustabout Tools, Assorted Tires

Nelson, Nelson & Nelson Estates
Dale, 406.963.7512

or Jesse May at Steffes Group, 406.431.9436



701.237.9173 | SteffesGroup.com

Steffes Group, Inc., 2000 Main Avenue East, West Fargo, ND 58078

TERMS: All items sold as is where is. Payment of cash or check must be made sale day before removal of items. Statements made auction day take precedence over all advertising. \$35 documentation fee applies to all titled vehicles. Titles will be mailed. Canadian buyers need a bank letter of credit to facilitate border transfer. Scott Steffes ND81, MT:RRE-BRO-LIC-16877, Brad Olstad ND319, Max Steffes ND999, Justin Ruth ND2019

